

# Cambourne Village College

September Opening 2020

Recorded 16 July 2020

# The Rationale for the September Return

- Prevalence of coronavirus (COVID-19) has decreased
- NHS Test and Trace system is up and running
- The scientific evidence shows that coronavirus presents a much lower risk of becoming severely ill to children than to adults
- Schools and colleges will be asked to put in place a range of protective measures.

Given the improved position, the balance of risk is now overwhelmingly in favour of children returning to school.

# The Local Picture: declining numbers of cases

Weekly numbers of pillar 1 & pillar 2 lab-confirmed cases of Covid-19 (most recent 8 recordings)

Area	Date, week starting								Total*
	11-May	18-May	25-May	01-Jun	08-Jun	15-Jun	22-Jun	29-Jun	
Cambridge	21	18	9	10	6	3	4	2	318
East Cambridgeshire	17	9	4	9	3	7	2	2	191
Fenland	47	50	13	14	22	18	11	5	413
Huntingdonshire	144	103	44	41	21	4	12	2	872
South Cambridgeshire	15	12	19	12	2	0	0	3	343
Cambridgeshire	244	192	89	86	54	32	29	14	2,193
Peterborough	151	124	74	71	53	56	46	19	1,265

Notes: Each weekly total refers to reports in the period Monday to the following Sunday (e.g. 1 Jun refers to period 1-7 June). Last updated on Monday 6 July 2020.

Local Test and Trace system is running effectively: most tests are coming back within 24 hours  
Please take care on holiday!

# Attendance

- School and college attendance will again be mandatory from the beginning of the new academic year. For parents and carers of children of compulsory school age, this means that the legal duty on you as a parent to send your child to school regularly will apply.
- Risk Assessment – published on website before September return
- Anxiety? Please contact us via your child's Year Team
- Shielding children will remain at home, under medical guidance

# The system of controls: protective measures

## Prevention

- 1) Minimise contact with individuals who are unwell by ensuring that those who have coronavirus (COVID-19) symptoms, or who have someone in their household who does, do not attend school
- 2) Clean hands thoroughly more often than usual
- 3) Ensure good respiratory hygiene
- 4) Introduce enhanced cleaning
- 5) Minimise contact between individuals and maintain social distancing wherever possible
- 6) Where necessary, wear appropriate personal protective equipment (PPE)

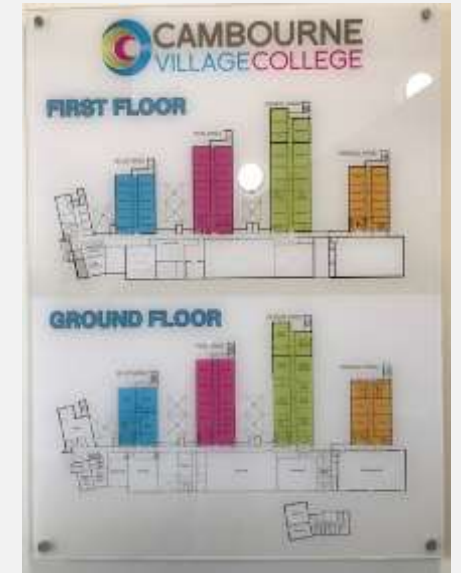
# The system of controls: protective measures

## Response to any Infection:

- 7) Engage with the NHS Test and Trace process
- 8) Manage confirmed cases of coronavirus (COVID-19) amongst the school community
- 9) Contain any outbreak by following local health protection team advice

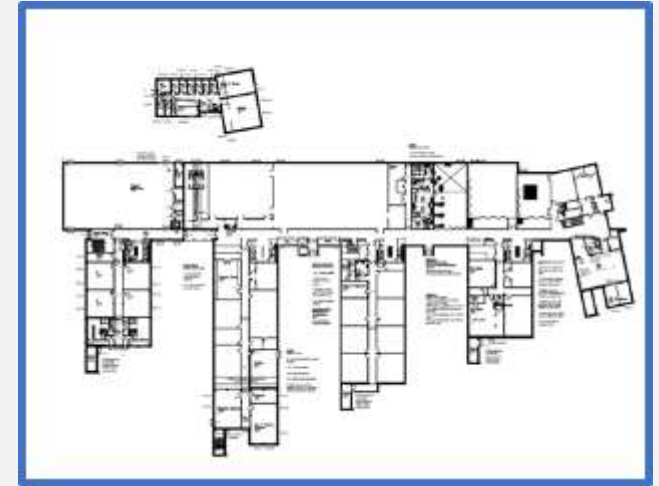
# School Layout Supports 'Bubble' Concept

- Separate year groups on separate floors within wings
- Pupils will spend more time in same room
- Staff will move between classrooms: 2 metre distance
- Fewer practicals at start of year
- Pupils will be taught in usual arrangements – tutor groups or sets
- Records kept of seating
- Facing forward in rows *where possible*



# Pupil Contacts Remain within Year Group

- Specialist rooms will be used when possible
- Pupil movement will be via outside of school
- More one-way systems
- Break times in separate social areas
- Dining by year group
- Marquees on order





# Curriculum and Assessment

- Government: aim to return to normal curriculum by summer 2021
- CamVC – normal timetable after first week back
- ‘Recovery Curriculum’ planned for all subjects
- Theoretical content at start of year
- Enhanced use of technology
- Marking and assessment will be online and via ‘Assignments’ on Teams app
- Additional catch-up funding

# Some adaptations

- Avoid sharing equipment: pupils must have own pencil cases - glue and blunt-nosed scissors useful
- Books and resources can be shared within year group – enhanced cleaning
- iPads – will be fully used – must be charged overnight
- Earphones needed: 3.5mm jack (standard round jack)
- Library books will be ‘rested’ if touched while browsing
- Pupils will come to school in PE kit when timetabled in morning



# Well-being and Behaviour

- A phased return
- Mental health survey – please share information with us
- Signposting to support services: internal and external
- Child Protection Team / the Link / school counsellors
- Tutor time
- Settling-in period
- Lessons will gradually build in intensity
- Amended behaviour policy
- Clear, reasonable and proportionate expectations of pupil behaviour
- Unsafe behaviour cannot be allowed

# First Week Back – Phased Approach

	Year 7	Year 8	Year 9	Year 10	Year 11
<b>Monday 7<sup>th</sup></b>	<b>STAFF TRAINING</b>				
<b>Tuesday 8<sup>th</sup></b> Yrs 7 & 11	8:40 arrival Periods 1 - 3 with tutors. P4-6 lessons				9:50 arrival Periods 2-3 with tutors P4-6 lessons
<b>Weds 9<sup>th</sup> AM</b> Yrs 7 & 11	8:40 arrival P1-4 lessons Home for lunch				8:40 arrival P1-4 lessons Home for lunch
<b>Weds 9<sup>th</sup> PM</b> Yrs 8, 9 & 10		1:30pm arrival Afternoon in tutor groups	1:00pm arrival Afternoon in tutor groups	12:30 arrival Afternoon in tutor groups	
<b>Thursday 10<sup>th</sup></b> All Years in all day	8:40 arrival Finish from 2.40pm	11:00 arrival Finish from 2.40pm	9:50 arrival Finish from 2.40pm	9:00 arrival Finish from 2.40pm	8:40 arrival Finish from 2.40pm
<b>Friday 11<sup>th</sup></b> All Years in all day	8:20 arrival Finish from 2.40pm	8:30 arrival Finish from 2.40pm	8:40 arrival Finish from 2.40pm	8:40 arrival Finish from 2.40pm	8:40 arrival Finish from 2.40pm



# Special Educational Needs and Disabilities

- Centre staff have done a brilliant job of supporting pupils during lockdown
- Some pupils will need more reassurance
- Gradual adjustment to being back at school
- Working on measures that will allow Teaching Assistants to continue to give individual support

# Uniform

- Pupils are expected to return in full uniform
- All trousers and skirts to be school-branded from January 2021
- Second uniform supplier on line from October
- All information on school website
- Donations of outgrown uniform welcome – bring to school Reception
- Please contact Mrs Katie Reynolds: [kreynolds@cambournevc.org](mailto:kreynolds@cambournevc.org) in confidence if you have difficulties in providing uniform at present

# Catering

- School caterers, Pabulum, back for start of term
- No breaktime food offer at first - snacks from home?
- Reduced range of hot and cold food at lunchtime
- Free school meals provided at lunchtime every day as usual

# Extra-Curricular / Trips

- Music instrument lessons from start of term
- Clubs will be introduced gradually on year-group basis
- No school trips planned for first term
- No Curriculum Extension days at end of first half-term



# Thank you for listening!

- This Presentation will be available on our website
- Schedule for return to school will be sent to you on the Parent Bulletin

If you have a question of a general nature, please submit it via the Form below. We will maintain a FAQs page on our website over the summer.

[https://forms.office.com/Pages/ResponsePage.aspx?id=1u3qfje\\_FUCP6Rn7wsAtVZ5anT3Tt8NCpB3-WECuym5UM1I5RldBREJWU0hQQUIQWjhSMlkwR0lHRi4u](https://forms.office.com/Pages/ResponsePage.aspx?id=1u3qfje_FUCP6Rn7wsAtVZ5anT3Tt8NCpB3-WECuym5UM1I5RldBREJWU0hQQUIQWjhSMlkwR0lHRi4u)



Thank you for all of your support this term.

Have the best possible summer break - take good care.

We are looking forward so very much to welcoming the pupils back in September!